



SKYCITY 13 METERS



**SKYCITY**  
13  
13LD | 13 LDI | 13LDDI

Next Implementos

Rod. Jornalista Francisco Aguirre Proença - SP 101, Km 26,5  
Bairro Jangada Branca, Monte Mor - SP, CEP 13193-581

+55 19 33072587 | +55 19 998723-0602  
[contato@nextimplementos.com.br](mailto:contato@nextimplementos.com.br)

# INSULATED AERIAL PLATFORM

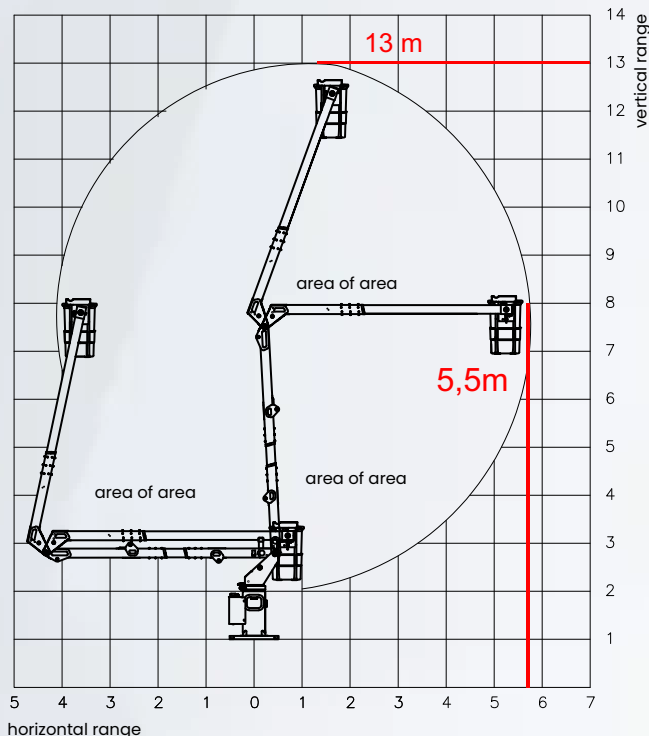


## STANDARD COMPONENTS

- Bucket for one operator, made of fiberglass, with external step;
- Polyethylene insulating liner;
- Equipment controlled by the tower or bucket;
- Emergency hand pump;
- Manually operated basket tipping system for cleaning manual override;
- Automatic bucket leveling system;
- Self-lubricating bushings;
- Upper arm with fiberglass insulating boom;
- Box adaptable to basket for inserting hand tools basket;
- Hour meter to control the time the equipment is in use;
- Protective cover for insulated booms and bucket;
- Infinite rotation of the tower;
- Counterbalance valve (holding type) for the boom cylinders;
- Piloted double check valve for the stabilizer cylinders;
- Quick coupling for tools located on the top;

## OPTIONAL

- On/off system next to the bucket;
- Shoe shims;
- Acceleration and deceleration system;
- Emergency electro-hydraulic pump;
- Stabilizers: Option of 01 or 02 pairs;
- Internal bucket step;
- Hydraulically operated basket tilting system for cleaning hydraulic drive;



## SKY CITY 13

### Operating Characteristics and Technical Specifications

Maximum working height	13,0 m
Maximum horizontal range	5,5 m
Quantidade estabilizadores hidráulicos	02 04*
Hydraulic stabilizer type	Type A
Number of buckets	01 02*
Rotation system	360° (infinity)
Electrical insulation/category	46kv - cat.C 69kv - cat.B
Hydraulic reservoir capacity	60 lts
Nominal working flow	10-20 lpm
Working pressure	140 bar
Approximate weight of equipment	900 kgs
Bucket capacity	136 kgs

### Recommended minimum vehicle capacity

Gross weight (minimum)	6 ton*
Minimum wheelbase	4,0 m

### SKYRITZ 13L

**Isulation:** Top  
**Basket:** 1 pc.  
**Stabilizers:** 1 Pair  
**Optional:** Assemble with 2 pairs of stabilizers  
**PTB Mínimo:** 6,0 tn

### SKYRITZ 13LD

**Isulation:** Top  
**Basket:** 2 pc.  
**Stabilizers:** 2 Pairs  
**PTB Mínimo:** 6,0 tn

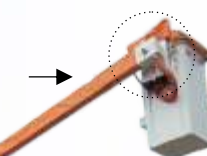
### SKYRITZ 13LDI

**Isulation:** Top and Bottom  
**Basket:** 1 pc.  
**Stabilizers:** 1 Pair  
**Optional:** Assemble with 2 pairs of stabilizers  
**PTB Mínimo:** 6,0 tn

### SKYRITZ 13LDDI

**Isulation:** Top and Bottom  
**Basket:** 2 pc.  
**Stabilizers:** 2 Pairs  
**PTB Mínimo:** 8,0 tn

Qualified to work with  
with voltages of  
46kv | 69kv  
(Category B and C)



Use of bushings in the equipment pins, speeds up preventive maintenance.



The equipment is designed, manufactured and tested in accordance with ANSI A92 and NBR 16092 standards, meeting the requirements established by the Ministry of Labor through of Labor through NR-12, Annex XII, Chapter 2.

+55 19 33072587 | +55 19 998723-0602  
contato@nextimplementos.com.br